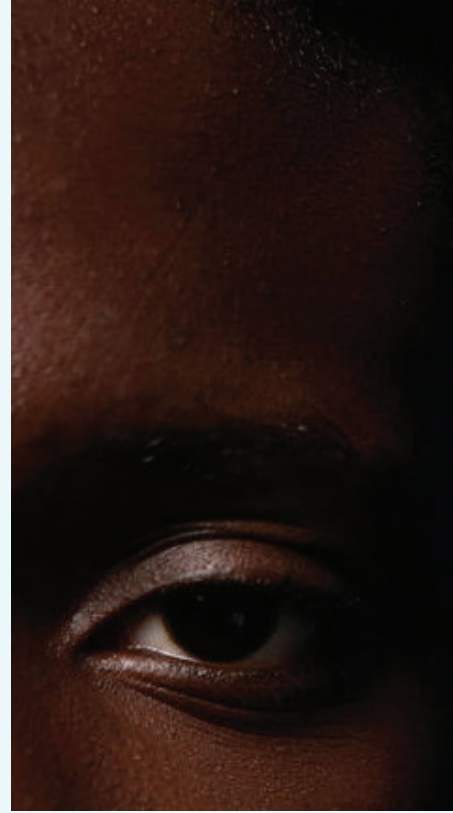



if you could do
JUST ONE THING
to transform young lives



THIS IS IT.



PATH TO COLLEGE
FELLOWSHIP



I DECIDED THAT IF I WANTED TO GET
OUT I HAD TO BELIEVE I COULD; I HAD
TO ALWAYS KEEP GOING NO MATTER
HOW HARD THE CIRCUMSTANCES
PRESENTED THEMSELVES OTHERWISE
THE DARKNESS WOULD CONSUME ME.

AS MY ENERGY TO KEEP WALKING
THIS PATH DIMINISHED, I SAW A TORCH—
PATH TO COLLEGE—BLAZING IN THE
DARKNESS AND REALIZED THAT I DID NOT
HAVE TO TREK THIS JOURNEY ALONE.

**WILKENS CADET ON HIS
PATH TO COLLEGE EXPERIENCE
UNIVERSITY OF FLORIDA, FULL SCHOLARSHIP**

READ WILKENS CADET'S POWERFUL COLLEGE
ENTRANCE ESSAY AT [PATHTOCOLLEGE.ORG/THIS.IS.IT](https://pathtocollege.org/this.is.it)

if you could do
JUST ONE THING
to make a life-long difference

THIS.IS.IT.

**If you could do JUST ONE THING
to make a real difference, what would that be?**

It's not an easy question for many of us. There are certainly a lot of overwhelming problems and not enough solutions within our power to give.

*But what if a real chance at a better future was ours to give someone?
What if we had the power to end poverty, life-long struggle, and wasted potential?
What if we could change a life, change generations, change systems for the better?*

Would you do it?

The lives and future of our young people are at tremendous risk without the support they need to get to college, earn a degree and secure employment.

- Students of low socioeconomic status in Palm Beach County enroll in college at a significantly lower rate than their more affluent peers, prolonging disparity among family generations and communities.
- Young people from lower-income families attend schools that are racially and economically segregated and lack the educational resources, role models and opportunities available in wealthier neighborhoods.
- Attending these schools are thousands of overlooked students who possess the same intelligence and aspirations as well-resourced students but carry a double burden by lacking finances and support.

Path To College is creating a world where genius, leadership, and excellence are cultivated in our community's most overlooked students, setting them on a path to achievement that transforms their outlook, ability and contribution in the world. And they are SOARING.

THIS.IS.IT.

Just one thing is making it happen. You.

We're asking you to look at the bright, capable students who need you. Read their stories. Feel their struggle and triumph. Celebrate real, life-changing success. Because this mission belongs to everyone if we want to share a future that is more hopeful and prosperous.

By doing JUST ONE THING — giving your support — you accomplish many, many great things.

Welcome, and thank you.
The Board, Staff and Supporters of Path to College Fellowship



HOW MANY GENERATIONS OF UNDERPRIVILEGED YOUTH WITH BRILLIANT MINDS ARE WE WILLING TO SEE WASTE AWAY? HOW MANY STUDENTS OF EXTRAORDINARY POTENTIAL ARE WE CONTENT TO LET FALL THROUGH THE CRACKS?

At Path to College, we say ABSOLUTELY NONE.

WE BELIEVE COLLEGE IS A CHOICE FOR EVERYONE

Going to college is a path that should be open to every student who desires a transformative academic and life experience. We open the path wide to ensure students know they have the personal choice to pursue college no matter what their circumstances might seem to dictate.

When a lack of resources is the only reason a student is overlooked for higher education, we rob our future of talent, leadership and economic stability. “Higher education continues to be an important driver of upward mobility. In fact, young people who begin life from the bottom 20% of family income can rise to the top 20% by age 30 with a college education.” [NCES: Table 302.20]

Path to College students are chosen based on their potential, character, drive and desire for the college diploma they deserve — and the full experiences and opportunities only college affords. College positively recalculates the future trajectory of our students and their ability to break cycles of family poverty and instability — an investment in a healthy society and economy for everyone.

THE PATH TO COLLEGE DIFFERENCE:

Unwavering support, incredible coaching and the right resources.

Our three-year fellowship provides catalysts for achieving college including:

- SAT college entrance test preparation
- Business and social skills-building
- Mental wellness and mindfulness training
- Mentoring and internships
- Career exposure and exploration
- Scholarship assistance
- Financial literacy

**A COLLEGE DEGREE REMAINS
THE GREATEST CONDUIT TO
THE MIDDLE CLASS. COLLEGE
GRADUATES OVERALL
ENJOY GREATER CAREER
OPPORTUNITIES, SALARIES,
HEALTH AND SECURITY
ACROSS THEIR LIVES.**

if you could do
JUST ONE THING
to bring equity to education

THIS. IS. IT.



PROOF POSITIVE:
THE PATH TO COLLEGE
IMPACT FOR STUDENTS

100%

OF OUR STUDENTS ARE ACCEPTED TO FOUR-YEAR UNIVERSITIES
UPON GRADUATING OUR 3-YEAR ACADEMIC FELLOWSHIP

70%

RECEIVE FULL SCHOLARSHIPS; OTHERS
RECEIVE **70-90%** COVERAGE

\$58M=

ESTIMATED INCREASE IN EARNING POTENTIAL
ONCE FELLOWS BEGIN THEIR CAREERS

100%

LIVE BELOW THE POVERTY LINE

\$150K=

IN-KIND EXPERT COLLEGE ADVISING
AND ENTRANCE EXAM TUTORING

750

ADDITIONAL STUDENTS SUPPORTED
THROUGH OUTREACH WORKSHOPS

\$4M=

SCHOLARSHIPS GRANTED
TO OUR GRADUATES SO FAR

EVERY PATH TO COLLEGE STUDENT HAS A REMARKABLE STORY TO TELL.

JUST IMAGINE — YOU CAN HELP WRITE THE NEXT CHAPTER.

HEART-WRENCHING, COURAGEOUS, AWE-INSPIRING: THESE ARE THE REAL STORIES OF A LIFETIME.

KEMBERLY NERTULUS
WASHINGTON UNIVERSITY, ST. LOUIS
FULL SCHOLARSHIP

READ HER MOVING STORY AT
[PATHCOLLEGE.ORG/THIS.IS.IT](https://pathcollege.org/this.is.it)

Every day Kemberly would wait in the hot sun for the bus, holding the hand of the one person she needed most, wanting nothing more than to prove worthy of her mother's sacrifices. Then Kemberly's mother fell gravely ill. As her mother fought for her life, the darkness nearly destroyed Kemberly's own will to live. She also struggled to either live up to her mother's dreams for her or discover how to live for herself.

"In my sophomore year of high school, Path to College unlocked unlimited possibilities and guidance for me, and, most importantly, introduced me to my mentor. She was the first to embolden me to pursue my own interests and take my future into my own hands."

if you could do
JUST ONE THING
to show you care

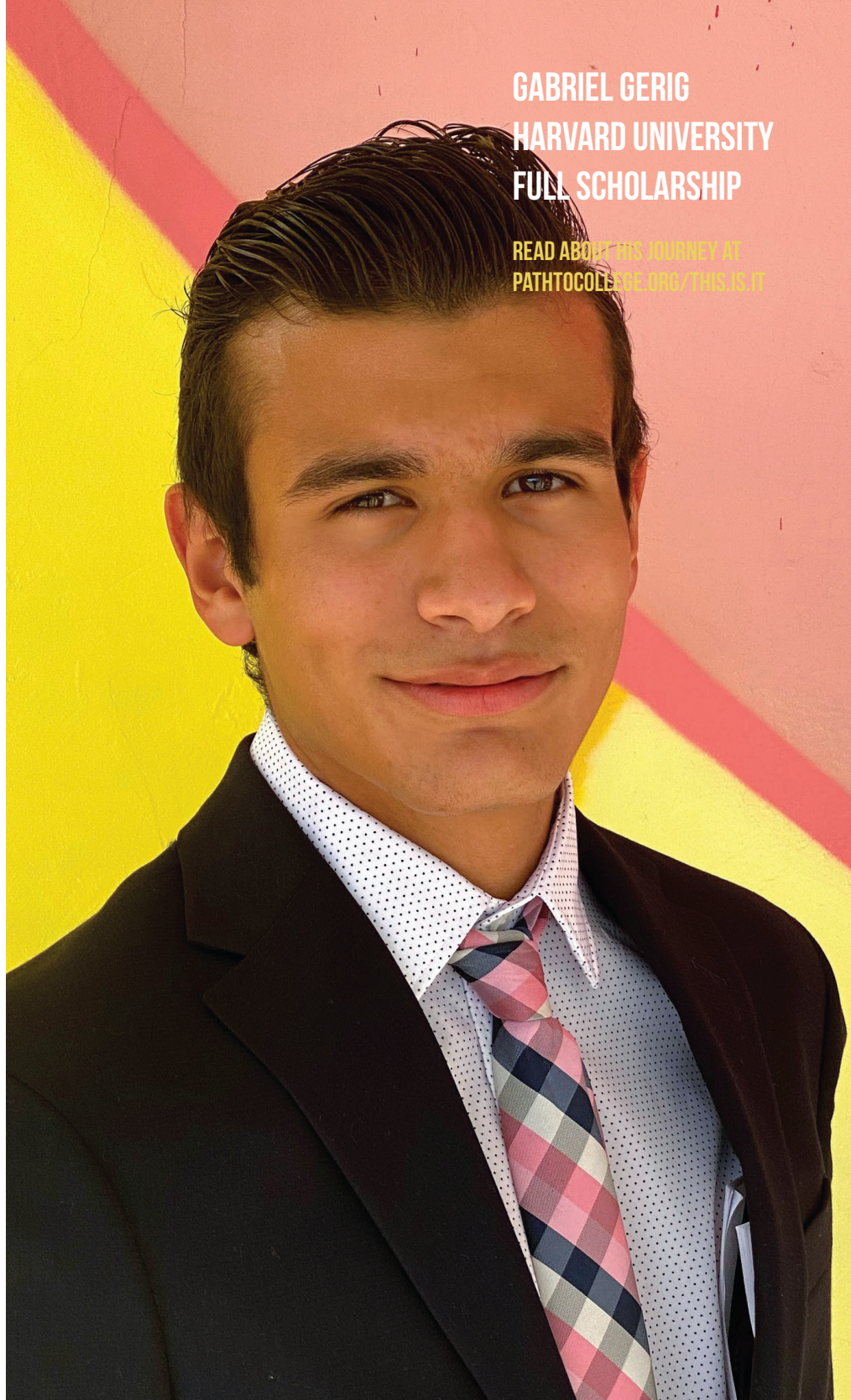
THIS.IS.IT.

**GABRIEL GERIG
HARVARD UNIVERSITY
FULL SCHOLARSHIP**

**READ ABOUT HIS JOURNEY AT
PATHTOCOLLEGE.ORG/THIS.IS.IT**

At 13, Gabriel's father left a prominent role as an attorney to escape Venezuelan corruption, violence and poverty. In their family's new life in America, Gabriel was devastated by the sacrifices they were forced to make, witnessing his father work 12-hour shifts delivering pizzas and cleaning homes. In school his broken English created even more struggles, academically and socially. Frustrated, he refocused on his dream to uplift his family.

When Gabriel joined Path to College, he began passionately speaking up and presenting ideas, growing his verbal and leadership skills. He found ways to encourage others and lead service efforts, including attending Boy's State and joining the Bezos Scholars Program. *"With Path to College's help, I am going to my dream school. One that those where I come from can only imagine going to."*



MEET MORE AMAZING STUDENTS AT PATHTOCOLLEGE.ORG/THIS.IS.IT

CLUNE HILL / UNIVERSITY OF FLORIDA / FULL SCHOLARSHIP

"I'VE NEVER BEEN SURROUNDED BY SO MUCH LOVE. WHEN I COULDN'T STAND FOR MYSELF, THEY STOOD FOR ME."

ROSE JAQUES / UNIVERSITY OF FLORIDA / INTERNATIONAL RELATIONS

A STORY OF LOSING HOME, FATHER AND CHILDHOOD TO GAIN COURAGE AND CONFIDENCE THROUGH PATH TO COLLEGE

OUR IMPERATIVE AT PATH TO COLLEGE IS EQUAL AND FULL DEVELOPMENT OF HUMAN POTENTIAL. JOIN US.

Growth and achievement are a blessing. Because so many people and partners believe in Path to College, we can deliver success measures that are transforming the college-going landscape for students of potential. Now at six years of serving more than 2,000 students, we are approaching a new era requiring more of us in resources, strategy and sustainability.

THE CHALLENGE

The growing rate of student and organizational need for space, staff and program resources.

THE SOLUTIONS

Our strategy calls for increased partnerships and philanthropy to actualize critical goals.

- Preparing students for competitive STEM study and careers requires expanding our subject matter team, reaching students earlier and expanding academic and corporate partners
- Breaking down barriers to student success means supporting them through adversity with increased access to mental health partners, hiring outreach management staff and virtual coaches, and increasing funding for student pre-scholarships
- Expanding our reach, resources and sustainability must be accomplished through strategic philanthropy and investments in stakeholder, student and operations support

THE FINANCIAL COST

Path to College is launching our very first capital campaign for facilities and programming while establishing an endowment for long-term sustainability and guaranteed student financial support and scholarships.

THE HUMAN CAPITAL COST

Path to College is increasing our portfolio of mentors, advisors, leaders, policy makers, teachers, parents and community members who believe in the power of education to bring enrichment, equality, justice and prosperity to everyone in our society.

if you could do
JUST ONE THING
to equip students for success

THIS IS IT.

"I TRULY BELIEVE THAT EDUCATION IS THE FOUNDATION OF SOCIAL CHANGE AND I SEE PATH TO COLLEGE AS A CATALYST TO MAKING THAT HAPPEN."

**MICHELLE PELLETIER
VICE PRESIDENT AND SENIOR COUNSEL
AT AMERICAN EXPRESS**

Path to College students celebrating at the end of the Shine and Dine Education Equity Gala. This gala gives students an opportunity to practice networking and etiquette skills.

**Read the PATH TO COLLEGE
STUDENT PLEDGE
at pathtocollege.org/this.is.it**



THIS IS IT. YOUR INVITATION.

Education equity cannot be delivered to deserving students without you. Life-changing outcomes are the return on your investment in long-term support, compassionate mentorship and meaningful connection for these hopeful and resolute young people.

Be part of something extraordinary when you pair your philanthropic goals and values to power this important cause. We can't thank you enough for your consideration and commitment.

FINANCIAL GIFTS

- Pledge your best gift to Path to College to acquire our own facilities, scale the capacity of our programs, and establish an endowment for scholarships and financial sustainability
- Contribute to student success with your unrestricted annual or monthly gifts
- Leave a legacy and support Path to College in perpetuity with your planned gift or Donor Advised Fund contribution

PERSONAL AND PROFESSIONAL GIFTS

- Commit to mentoring a student throughout their three-year Fellowship to graduation and college acceptance
- Offer your professional expertise to our Board of Directors, students, or organization

With You, we are creating a world where genius, leadership, and excellence are cultivated in our community's most overlooked students who possess the same intelligence and aspirations as well-resourced students but carry a double burden, lacking finances and support.

Meet some special student and mentor relationships at pathtocollege.org/this.is.it

BY DOING JUST ONE THING — GIVING YOUR SUPPORT — YOU ACCOMPLISH MANY, MANY GREAT THINGS.

**DONATE AT
[PATHTOCOLLEGE.ORG/
THIS.IS.IT](http://PATHTOCOLLEGE.ORG/THIS.IS.IT)**

PATH TO COLLEGE STAKEHOLDERS

BECAUSE TRUSTING THE WAY WE MANAGE OPERATIONS AND DELIVER OUTCOMES IS AN IMPORTANT CONSIDERATION FOR YOUR INVESTMENT, YOU CAN BE ASSURED BY THE RELATIONSHIPS WE HOLD WITH SOME OF FLORIDA'S MOST PROMINENT SUPPORTERS OF YOUTH EDUCATION PROGRAMMING: AMERICAN EXPRESS, COMMUNITY FOUNDATION FOR PALM BEACH AND MARTIN COUNTIES, DELUCA FOUNDATION, FLORIDA POWER AND LIGHT, JIM MORAN FOUNDATION, NEXT ERA ENERGY, OFFICE DEPOT, PALM BEACH COUNTY SHERIFF'S OFFICE, AND UNITED WAY OF PALM BEACH COUNTY

if you could do
JUST ONE THING
to leave your future legacy

THIS IS IT.



we fearlessly clear the path for overlooked students to get into the best colleges with the best scholarships.

“PATH TO COLLEGE, FOR ME IS THE MODEL FOR HOW YOU MENTOR A YOUNG PERSON. I COULDN'T BE PROUDER TO BE ASSOCIATED WITH THIS ORGANIZATION.”

ALEX PRICE

FORMER NATIONAL DIRECTOR OF COMMUNITY INVESTMENT/CO-LEADER
DIVERSITY COUNCIL AT OFFICE DEPOT

Meet some special student and mentor relationships at pathtocollege.org/this.is.it



HELLO@PATHTOCOLLEGE.ORG
(561) 907-7679

